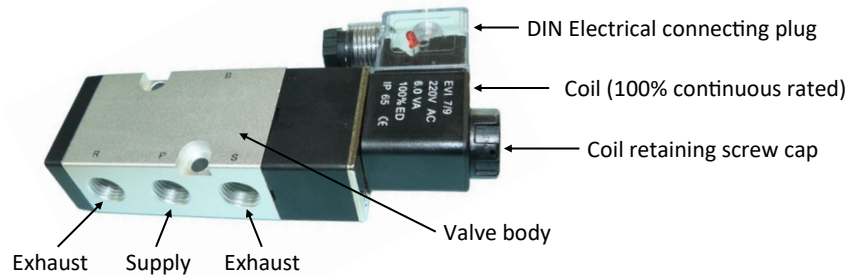
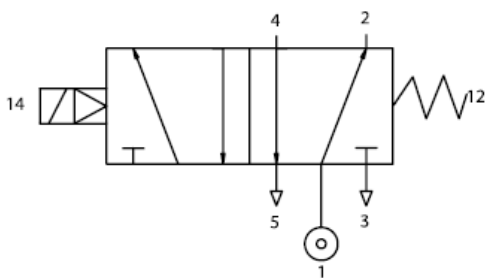
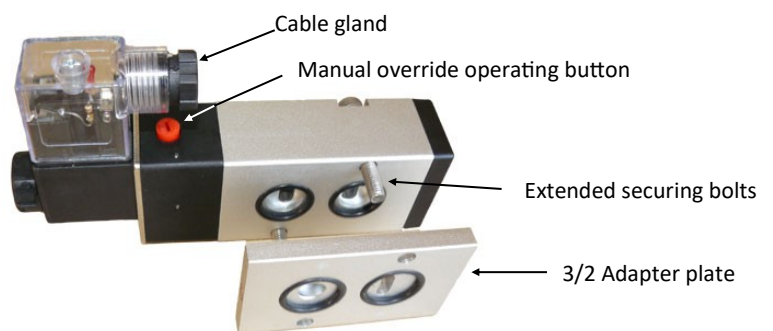
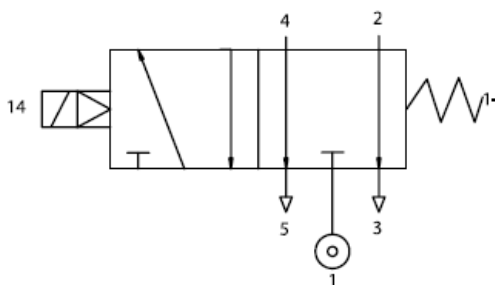


Specifications		Installation, Operation & Maintenance	
Body material	Anodised aluminium	Installation:	
Seals	NBR	Mounting	Direct mounts to Namur interface with supplied 'O' rings and bolts.
DC Coil voltages	12, 24, 110	Air connections	1/4" BSP female. Ensure no PTFE thread tape is allowed to be drawn into the valve as this will cause the spool to stick. Use silencers in the exhaust ports to prevent the ingress of dirt which will cause the valve to stick.
AC Coil voltages	24, 110, 220 (1ph)	Air supply	Lubricated filtered compressed air preferred. If supplied with non-filtered/lubricated air, the valve spool will require periodic cleaning.
Connector	10mm DIN 40050	Wiring	2 wire (& earth) connection to DIN plug, see below. Ensure gasket is fitted between coil and body. Do not over-tighten securing screw.
Protection class	IP65	Operation:	
Ambient temperature	0C to +50C	Automatic	Apply continuous compressed air to port P (2.5 - 10Bar). Energising the coil opens the valve. De-energising the coil closes the valve
Media	Compressed air	Manual	With air applied, but no power, the valve can be operated by hand using the red push down & hold, or turn down (screwdriver) & lock manual button.
Interface	Namur	Maintenance:	If non-filtered air is supplied, the spool assembly will require periodic stripping, cleaning, and re-assembling, otherwise the valve is maintenance free.

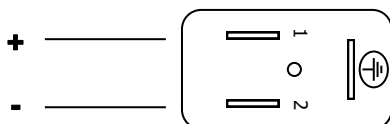
5/2 Operation for double acting actuators (air open, air close)



3/2 Operation for single acting actuators (air open, spring close)

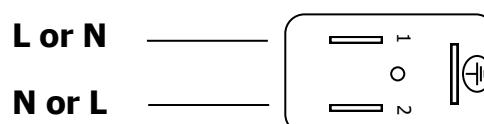


LED DIN plug wiring: DC



Polarity sensitive - LED will not light if polarity not respected.

LED DIN plug wiring: AC



Not polarity sensitive - LED will light with either connection.