



AVS - the ISO9001-2015 UK experts for all your **electric valve actuation** needs.

Available from stock at www.actuatedvalvesupplies.com

**UK's top
Actuated
Valve
Supplier**

24-240V J3C S TYPE SMART ACTUATOR FEATURES

IP67 Ingress protection

Fully weatherproof and even short term submersion.

Multi-voltage 24-240V AC/DC

All external electrical connection. Saves installation time as no need to remove the cover to connect. Simply wire the 3 pin plugs supplied with the actuator.

Power connector

Colour coded grey DIN plug for power.

Volt-free remote position confirmation

Colour coded black DIN plug for end of travel confirmation.

Selectable manual override

Switches between manual and auto operation. Stays in manual until auto re-selected.



Local dome mechanical position indicator

Shows flow path in 2 and 3 way valves.

Multi-colour LED status light

Power 'on' light. Superb for fault diagnosis. Blinks to advise fault. Blink sequence helps pinpoint the cause.

Anti-condensation heater

Automatic when power is connected.

Electronic over torque protection

Protects actuator against jammed valves.

Multi-ISO5211 mount & star drive

Allows direct mounting to ISO5211 compliant valves.

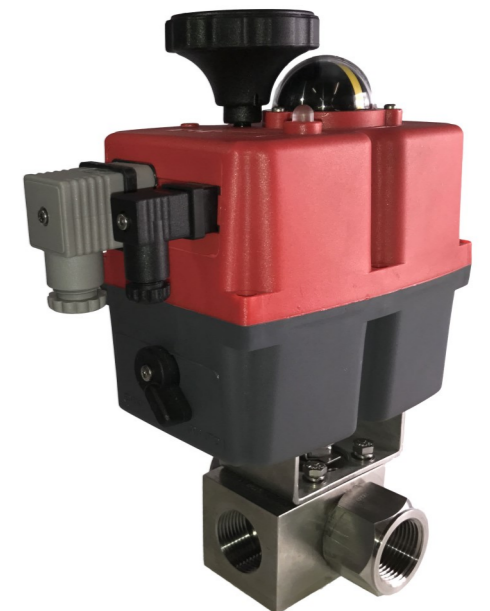
From an EU manufacturer, who are market leaders in electric valve actuator innovation.

HIGH PRESSURE BALL VALVES

Typically 6,000psi rated 2 and 3 way ball valves in 316 stainless steel, these block body style ball valves offer a compact solution in high pressure applications.

The valve stem arrangements are modified for actuation and the J3C S Type is mounted to the high pressure ball valves via a stainless steel box section mounting kit.

Supplied fully assembled by AVS, and always dry bench function tested prior to shipping.



FUNCTION OPTIONS FROM STOCK

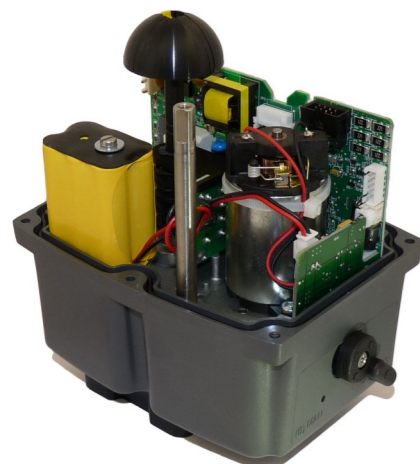
ON OFF CONTROL

The most common application, powered open and powered closed by switching the live between the open and close contacts. Power remains on at all times. Stays put on loss of external power.

FAILSAFE FUNCTION

Our Battery 'Spring Return' failsafe system creates failsafe functionality with an internal industrial re-chargeable battery and battery charging circuit board. LED flashes when activated.

Provides either fail closed (NC) or fail open (NO) functionality on loss of external power.



With battery failsafe installed

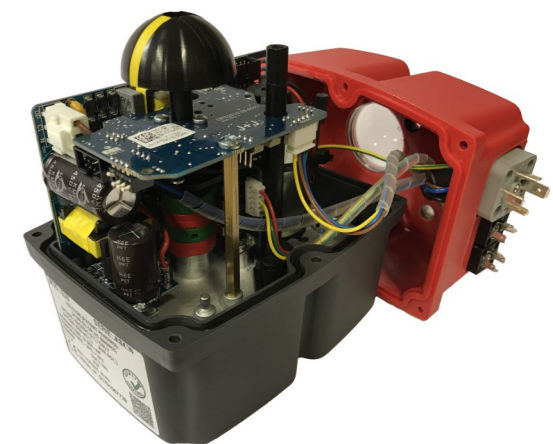
MODULATING CONTROL

Modulating or proportional control is achieved with the BOSS Digital Positioning System

The DPS can use either a 0-10V, 1-10V, 0-20mA or 4-20mA control signal and provides an output signal as standard. Fails open, closed or stays put on loss of control signal and stays put on loss of external power.

FAILSAFE MODULATING CONTROL

For those critical applications where the actuator needs to set the valve in a pre-determined 'safe' position on either loss of control signal **OR** on loss of external power, failsafe modulating functionality is required. In the J3C-S this is effortlessly achieved by us simply installing inside the actuator both the battery failsafe system and the digital modulating system.



J3C-S with digital positioner installed