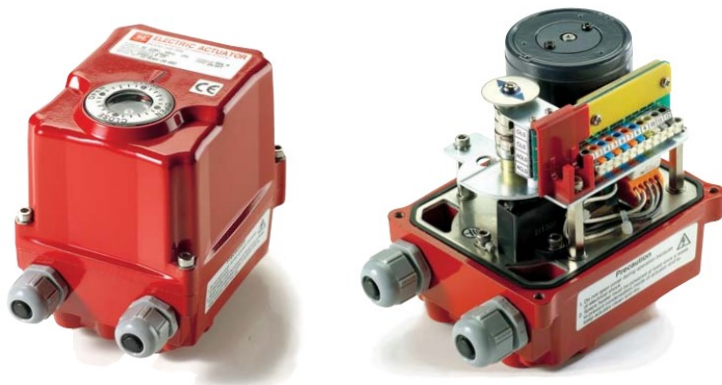


Available with actuator function: **POWER OPEN - POWER CLOSE**

HQ-004



Overview

The HQ-004 electric valve actuator from the Korean electric actuator manufacturer HKC offers a robust and reliable aluminium housed electric actuator ideal for ball valves, butterfly valves, plug valves and dampers. Durability is built in with a dry epoxy powder coated hard anodised aluminium housing.

HQ-004 Electric Actuator Specifications

Voltage range / Duty rating	Low voltage version	24 AC/DC / 35%
	High voltage version	110VAC, 220VAC / 35%
Operating time (0-90°)	With load 50/60Hz	14/12 seconds
Maximum break torque	Max including safety	40 Nm (354 lb.ins)
IP Rating (IEC 60529)		IP67
Emergency hand operation		Yes, male hexagonal drive
Working angle Standard (on request)		90°
Mounting ISO:5211 x DIN 3337		F03,F05 & F07 x 14 (std)
Motor switches		2 x SPDT micro switches (250VAC 3A Max)
End of travel confirmation (volt free)		2 x SPDT micro switches (250VAC 3A Max)
Heater		2W
Ambient temperature range		-20° to +70°C (-4 to +158°F)
Electrical connections		2 x M20
Weight		3.0 kg
Consumption		
Current AC	24V	1.7A
Current DC	24, 110, 220V	1.7 / 0.4 / 0.2A

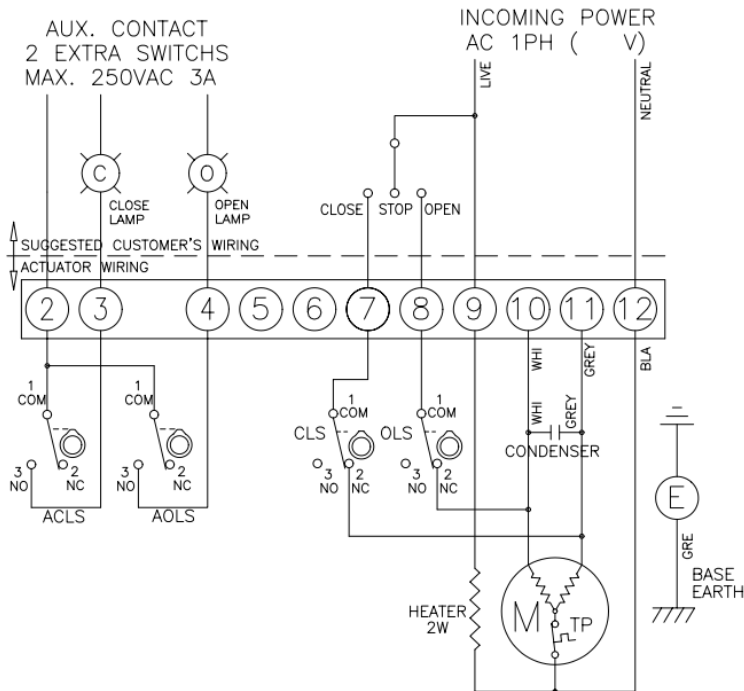
How this HQ electric 1/4 turn valve actuator works (on-off)

Electrically operated valves are driven by an electric actuator containing a motor and gearbox. On receipt of a continuous voltage signal (not pulse) the motor runs and, via a gearbox in the electric actuator, rotates the valve stem. The motor stops at the desired position (usually 0° or 90°) by an internal cam striking a micro-switch. The valve actuator remains in this position, with the voltage still applied continuously, until switched and a continuous voltage reversing signal (not pulse) is applied, which runs the motor in the opposite direction, reversing the rotation until a separate internal cam strikes a separate micro-switch and stop the motor. The HQ actuator is designed to have the external power continuously applied, and power should not be switched off when end of travel is achieved.

Available with actuator function: POWER OPEN - POWER CLOSE

HQ-004 ON-OFF WIRING (110 or 220VAC 1ph)

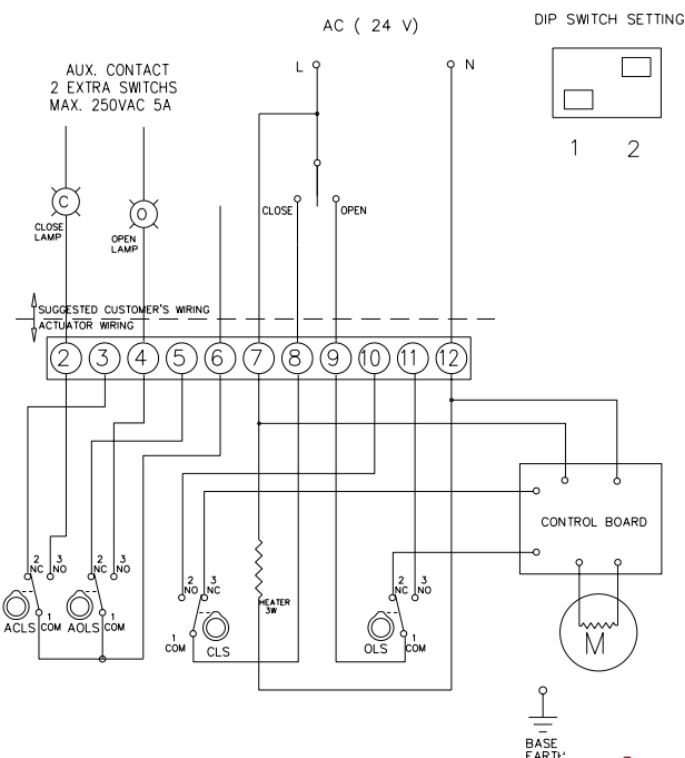
Power open, power close, stays put on loss of external power.



TORQUE AND LIMIT SWITCH OPERATION			
SWITCH	CLOSE ←	INTERMEDIATE	→ OPEN
CLS 1-2			
CLS 1-3			
OLS 1-2			
OLS 1-3			
ACLS 1-2			
ACLS 1-3			
AOLS 1-2			
AOLS 1-3			
SYMBOL	DESCRIPTION		RATING
CLS	CLOSE LIMIT SWITCH		250VAC 5A
OLS	OPEN LIMIT SWITCH		250VAC 5A
ACLS	AUX. CLOSE LIMIT SWITCH		250VAC 5A
AOLS	AUX. OPEN LIMIT SWITCH		250VAC 5A
TP	THERMAL PROTECTOR		250VAC 15A
*EACH ACTUATOR SHOULD BE POWERED THROUGH IT'S OWN INDIVIDUAL SWITCH OR RELAY CONTACTS TO PREVENT CROSS FEED BETWEEN TWO OR MORE ACTUATORS.			

HQ-004 ON-OFF WIRING (24VAC 1ph)

Power open, power close, stays put on loss of external power.

[illegible]

HQ-004 ON-OFF WIRING (24VDC)

In the interest of product improvement, specifications may change without notice.

Available with actuator function: **POWER OPEN - POWER CLOSE**

HQ-004 ELECTRIC ACTUATOR DIMENSIONS

