



3 Piece Stainless Ball Valve with Plastic Valbia Electric Actuator

**Main VALBIA Plastic electric actuator features:**

- Corrosion resistant technopolymer housing
- V0 Self extinguishing housing
- Fully weatherproof smart industrial actuator.
- ISO5211 - DIN3337 Painted aluminium valve connection
- Emergency manual override facility.
- Thermostatic anti-condensation heater.
- Electronic torque limiter.
- End of travel switches for remote open/ closed indication.
- CE marked.
- EU manufactured by Valbia.

**Applications:**

Potable water (but not WRAS approved), oil, air and most non-corrosive media, subject to compatibility with wetted parts in contact with media.

Valbia Actuators sized on a maximum differential pressure of 10 bar wet service, operated at least once per day. If the intended duty differs from these parameters, or is dry (air or gas) call to check valve actuator sizing as a larger output electrical actuator may be required.

Maximum working temperature of a direct mounted assembly is +55C. For higher working temperatures, consider models that have a mounting kit between the valve and actuator which uses air cooling to dissipate the rising heat from the valve away from the actuator. Should the Valbia electric actuator see more than +55C it will malfunction.

**How this electric 1/4 turn valve works (on-off):**

Electrically operated valves are driven by a motor and gearbox. On receipt of a continuous voltage signal the motor runs and, via a gearbox in the Valbia electric actuator, rotates the valve stem. The motor stops at the desired position (usually 0° or 90°) by internal cams striking micro-switches. The smart valve actuator remains in this position, with the voltage still applied continuously, until switched and a continuous voltage reversing signal is applied, which runs the motor in the opposite direction, reversing the rotation until separate set of internal cams strike separate set of micro-switches.

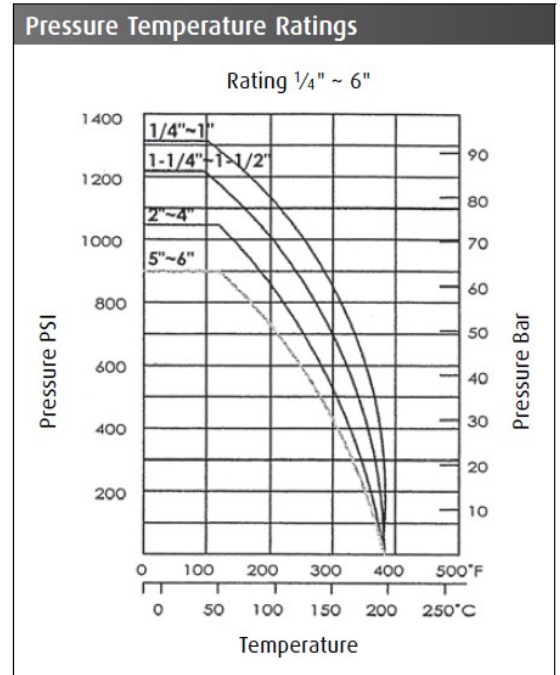
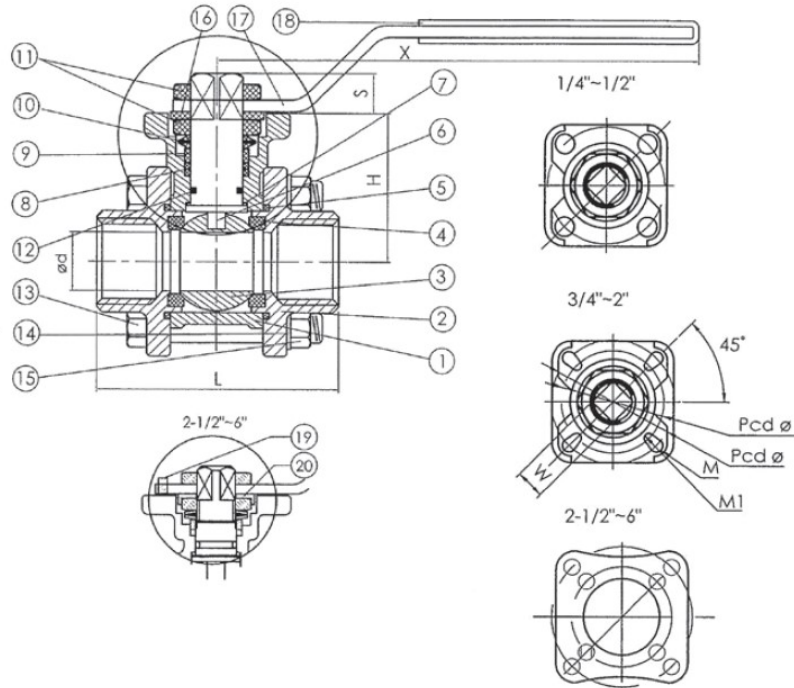
Specifications:	
Actuator housing	Technopolymer
Supply voltage range	24V AC or DC, or 110V, or 240VAC
IP Rating	IP67
Actuator temp limits	-10 to +55°C
Assembly temp limits	E2100ES-VB +55°C Direct mount E2110ES-VB +110°C Mounted via kit
Valve body	CF8M (Cast 316SS)
Valve ball	316SS
Valve seats	PTFE
Valve Pressure rating	UTI 2" 63 bar at ambient temp
Valve temp limits	-10 to +180°C
Size range	1/4" to 4"

**Ball valve information:**

Full bore 3 piece construction, blow-out proof ball and stem, anti-static, providing full unrestricted flow and a very low pressure drop across the valve. Centre sections swings out allowing in-line maintenance. Designed for automation with integrally cast ISO5211 actuator mounting platform. Turning the ball through 90° fully opens the valve, turning back through 90° fully closes the valve and isolates the flow. End connections are threaded BSP female. NPT ends available as an option.

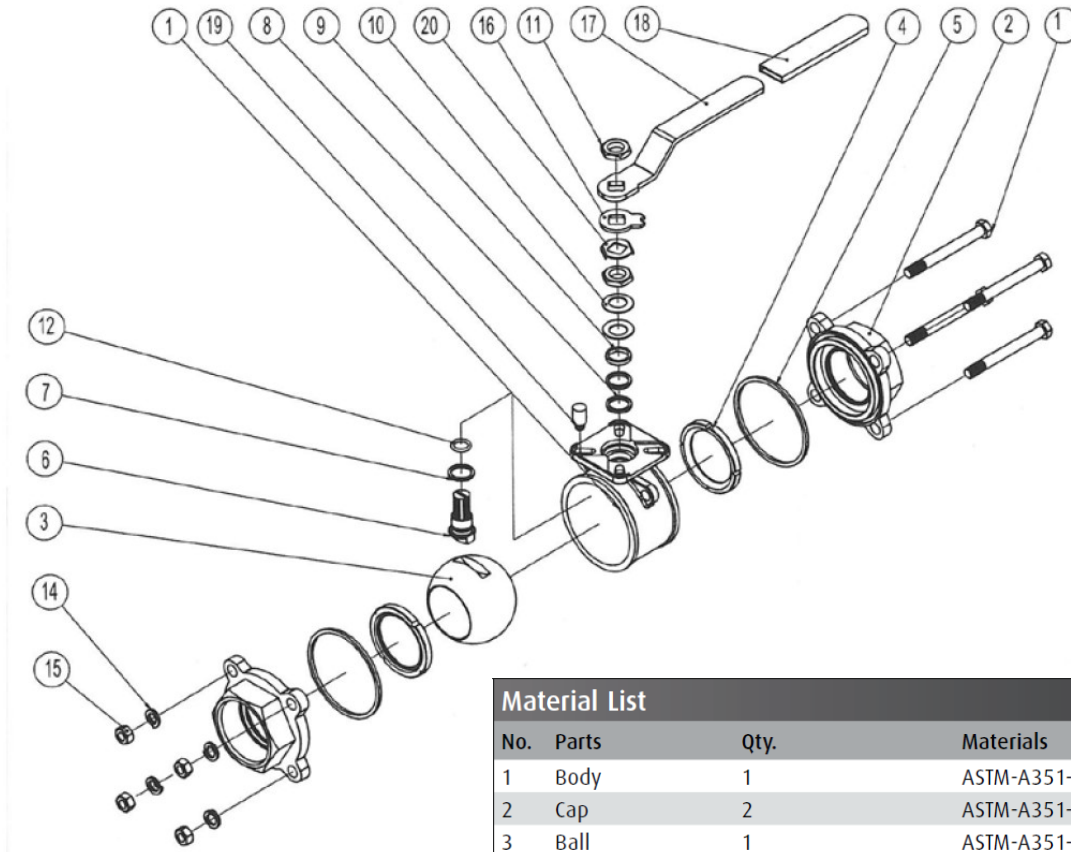
Stainless Steel Ball Valve – Three-Piece - ISO Top

Screwed BSPP, Full Bore, Stainless Steel Body, Ball & Stem, PTFE Seats & Seals, ISO Topworks, Anti-Blowout Stem



Dimensions															
Size	od	L	H	S	X	ISO 5211				Cv Factor	Torque kgf-cm	D	d	K	K1
						Pcd ø	W	M	M1						
1/4"	11.6	58.0	36.0	9.6	112	F03	ø36	9	R3.0	-	6.6	45	ø18.1	ø11.6	ø14.1
3/8"	12.8	58.0	36.0	9.6	112	F03	ø36	9	R3.0	-	7.9	45	ø18.1	ø12.7	ø17.6
1/2"	15.0	62.0	38.0	9.6	112	F03	ø36	9	R3.0	-	11.2	55	ø21.7	ø15.0	ø21.7
3/4"	20.0	77.0	41.7	11.6	138	F04 F05	ø42 ø50	11	R3.5	R3.0	21.0	90	ø27.2	ø20.0	ø27.2
1"	25.0	83.0	44.4	11.6	138	F04 F05	ø42 ø50	11	R3.5	R3.0	34.0	110	ø34.0	ø25.0	ø33.9
1 1/4"	32.0	94.0	52.8	11.2	205	F05 F07	ø50 ø70	14	R4.5	R3.5	57.0	155	ø42.7	ø32.0	ø42.6
1 1/2"	38.0	107	58.5	11.2	205	F05 F07	ø50 ø70	14	R4.5	R3.5	80.0	220	ø48.6	ø40.0	ø48.7
2"	50.0	120	66.0	11.2	205	F05 F07	ø50 ø70	14	R4.5	R3.5	148	330	ø60.5	ø50.0	ø61.1
2 1/2"	65.0	157	101.5	18.5	330	F07 F10	ø70 ø102	17	R5.5	ø9.0	265	400	ø76.3	ø65.0	ø73.8 ø70.9
3"	80.0	182	112.5	18.5	330	F07 F10	ø70 ø102	17	R5.5	ø9.0	415	660	ø93.0	ø80.0	ø89.8 ø82.5
4"	100	213.6	127.0	18.5	330	F07 F10	ø70 ø102	17	R5.5	ø9.0	780	900	ø114	ø100	ø115.4 ø108

Stainless Steel Ball Valve – Three-Piece - ISO Top



Material List			
No.	Parts	Qty.	Materials
1	Body	1	ASTM-A351-CF8M
2	Cap	2	ASTM-A351-CF8M
3	Ball	1	ASTM-A351-CF8M
4	Ball Seat	2	PTFE
5	Joint Gasket	2	PTFE
6	Stem	1	AISI 316
7	Thrust Washer	1	PTFE
8	Stem Packing	2	PTFE
9	High Washer	1	AISI 304
10	Belleville Washer	2	AISI 304
11	Stem Nut	2	AISI 304
12	O-Ring	1	Viton
13	Bolt	4 (2½ ~ 4" x 6 pcs)	AISI 304
14	Spring Washer	4 (2½ ~ 4" x 6 pcs)	AISI 304
15	Hex Nut	4 (2½ ~ 4" x 6 pcs)	AISI 304
16	Stopper	1	AISI 304
17	Handle	1	AISI 304
18	Plastic Cover	1	Plastic
19	Stopper Pin	1	AISI 304
20	Lock Washer	1	AISI 304